

Comuna de Lebu sin la Isla Mocha, Versión 2025

Mapa escala 1:50.000

Mosaico de hojas

Hoja 1-1	Hoja 1-2	Hoja 1-3
Hoja 2-1	Hoja 2-2	Hoja 2-3
Hoja 3-1	Hoja 3-2	Hoja 3-3
Hoja 4-1	Hoja 4-2	Hoja 4-3

	616 000	618 000	620 000	622 000	
5858 000					
5856 000					
5854 000					
5852 000					Bal
5850 000					Pun
18 000					

624 000

626 000

628 000

630 000

632 000



ña Carnero

ta Batro

Río Quiapo

Quiapo

E. El Roble

P-348

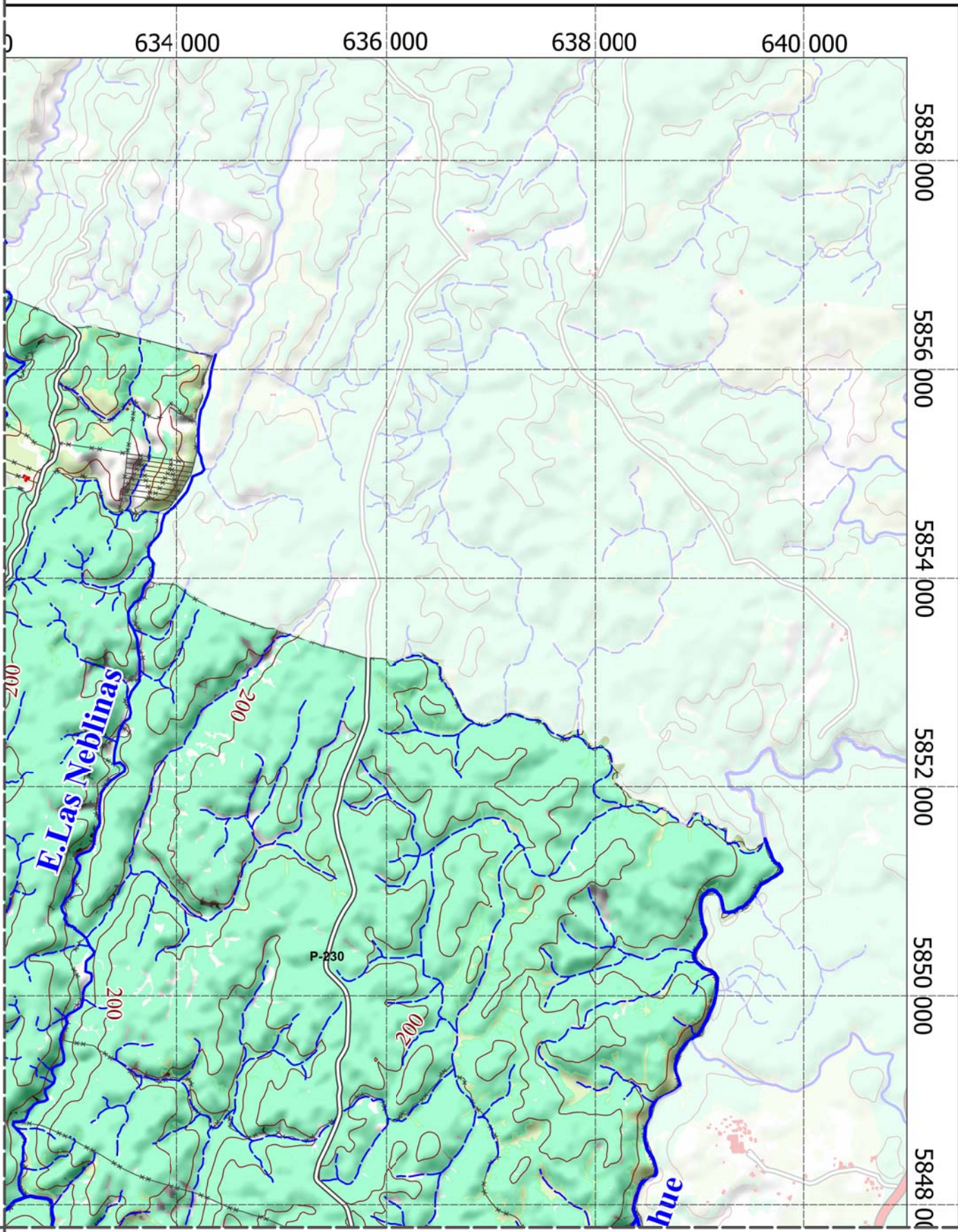
P-382

P-40

P-380

100

Villarrica



X

X

E. Las Neblinas

P-230

hue

634 000

636 000

638 000

640 000

5858 000

5856 000

5854 000

5852 000

5850 000

5848 000

584
5846 000
5844 000
5842 000
5840 000
5838 000
5836 000

Caleta Ra

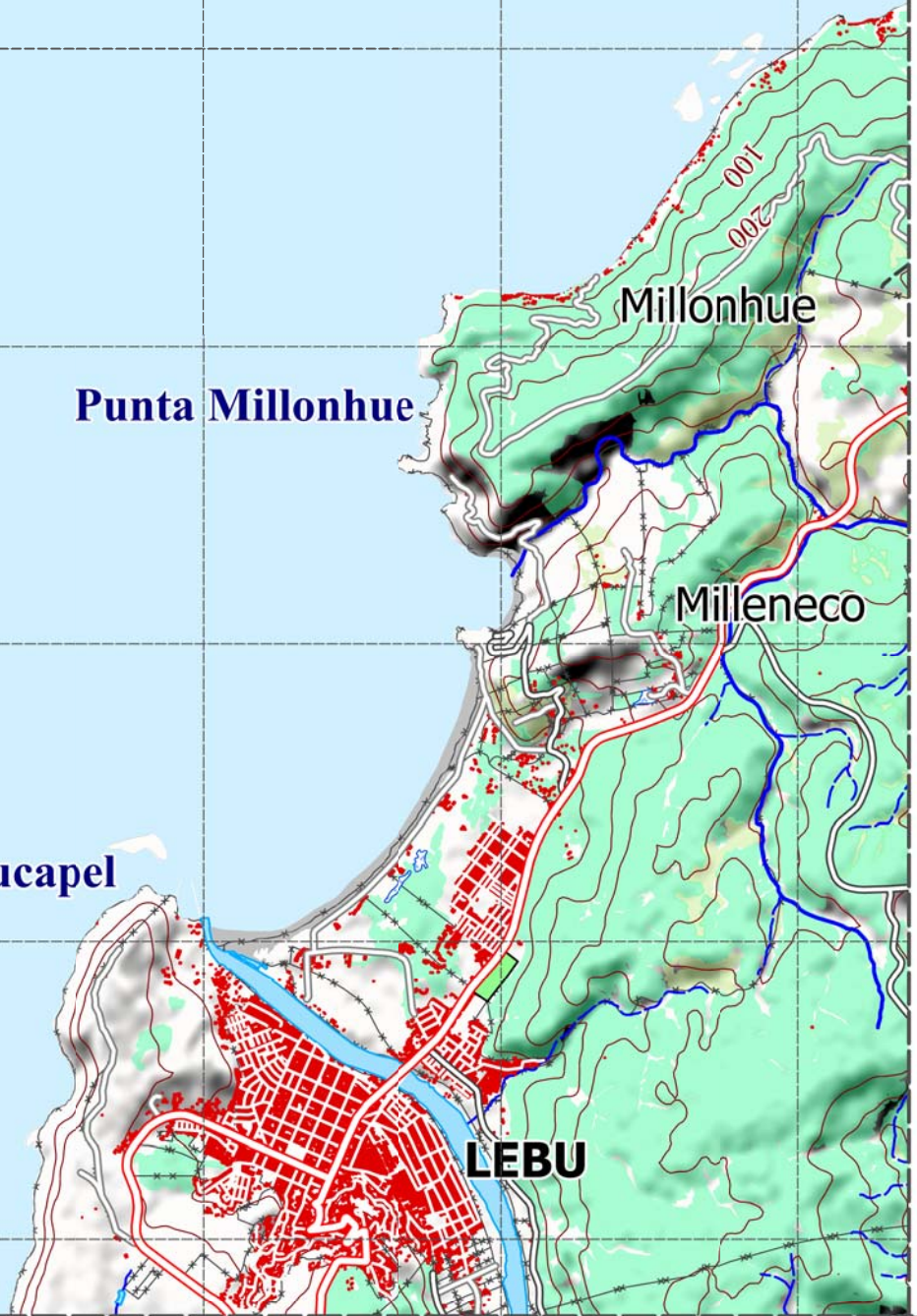
Punta Millonhue

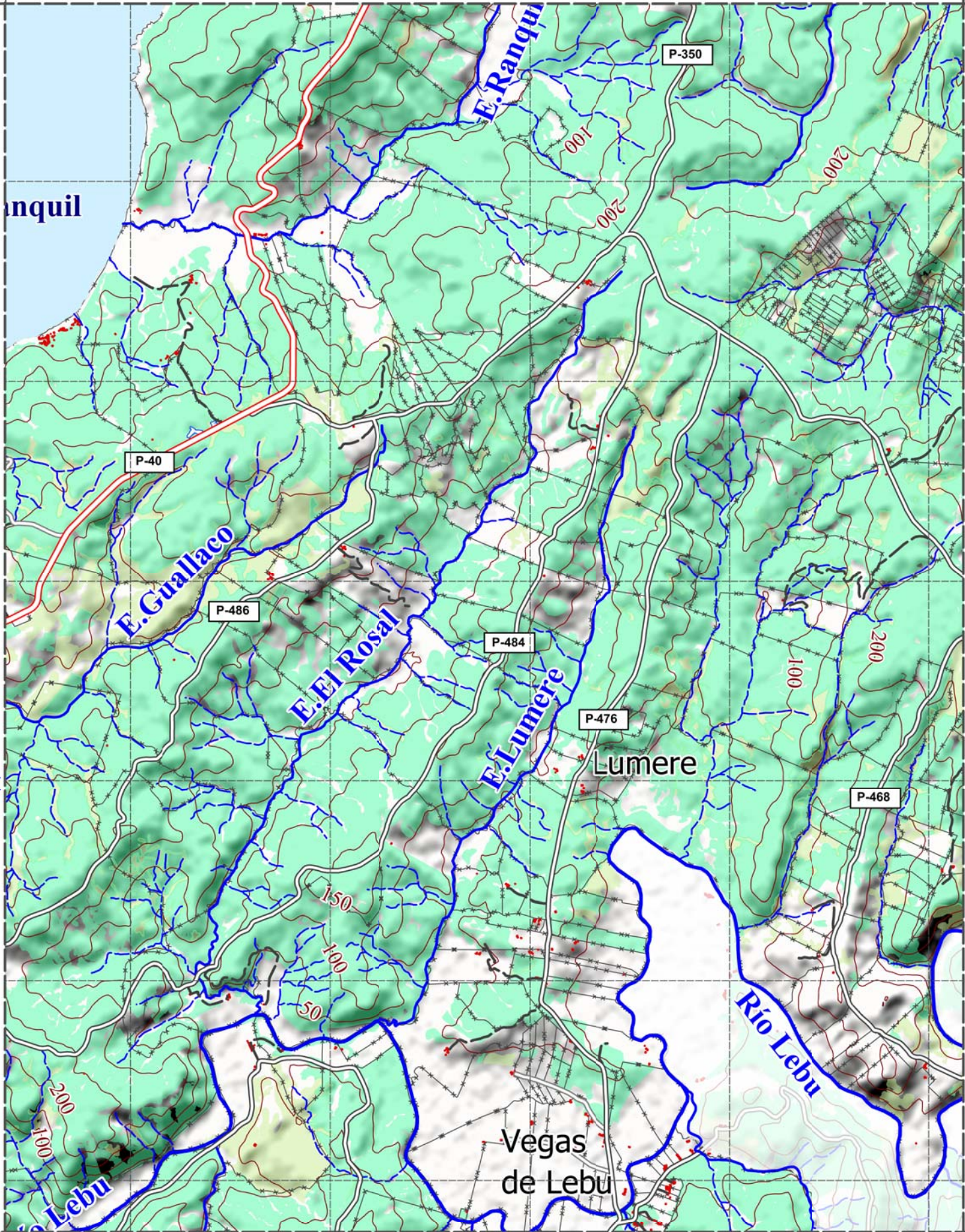
Millonhue

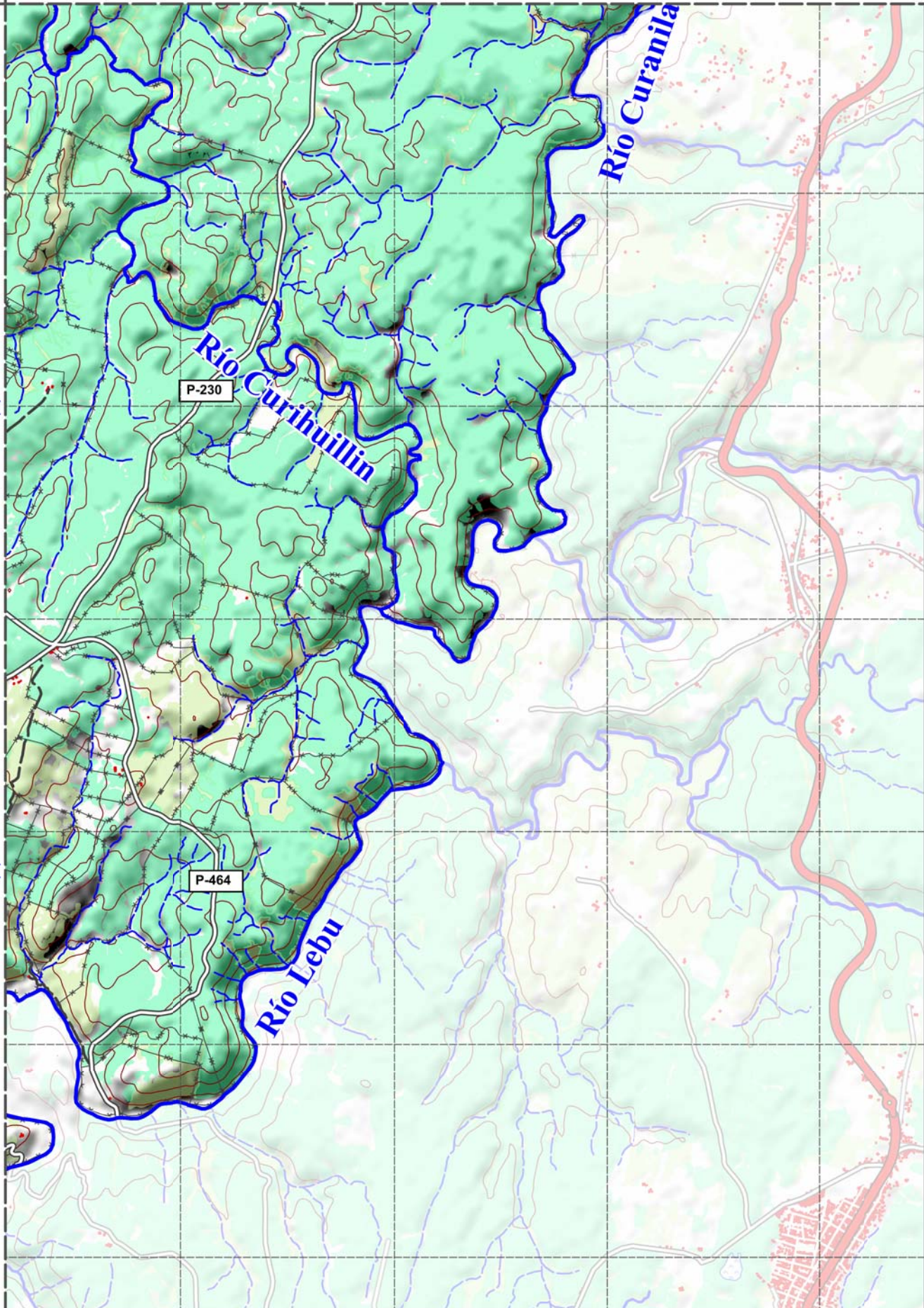
Milleneco

Punta Tucapel

LEBU







5846 000
5844 000
5842 000
5840 000
5838 000
5836 000



5834 000

5832 000

5830 000

5828 000

5826 000

5824 000

Punta Bocarripe

Punta Liles

Punta Chimpel

Punta Morguilla

Santa Rosa

Chimpel

E. Chimpel

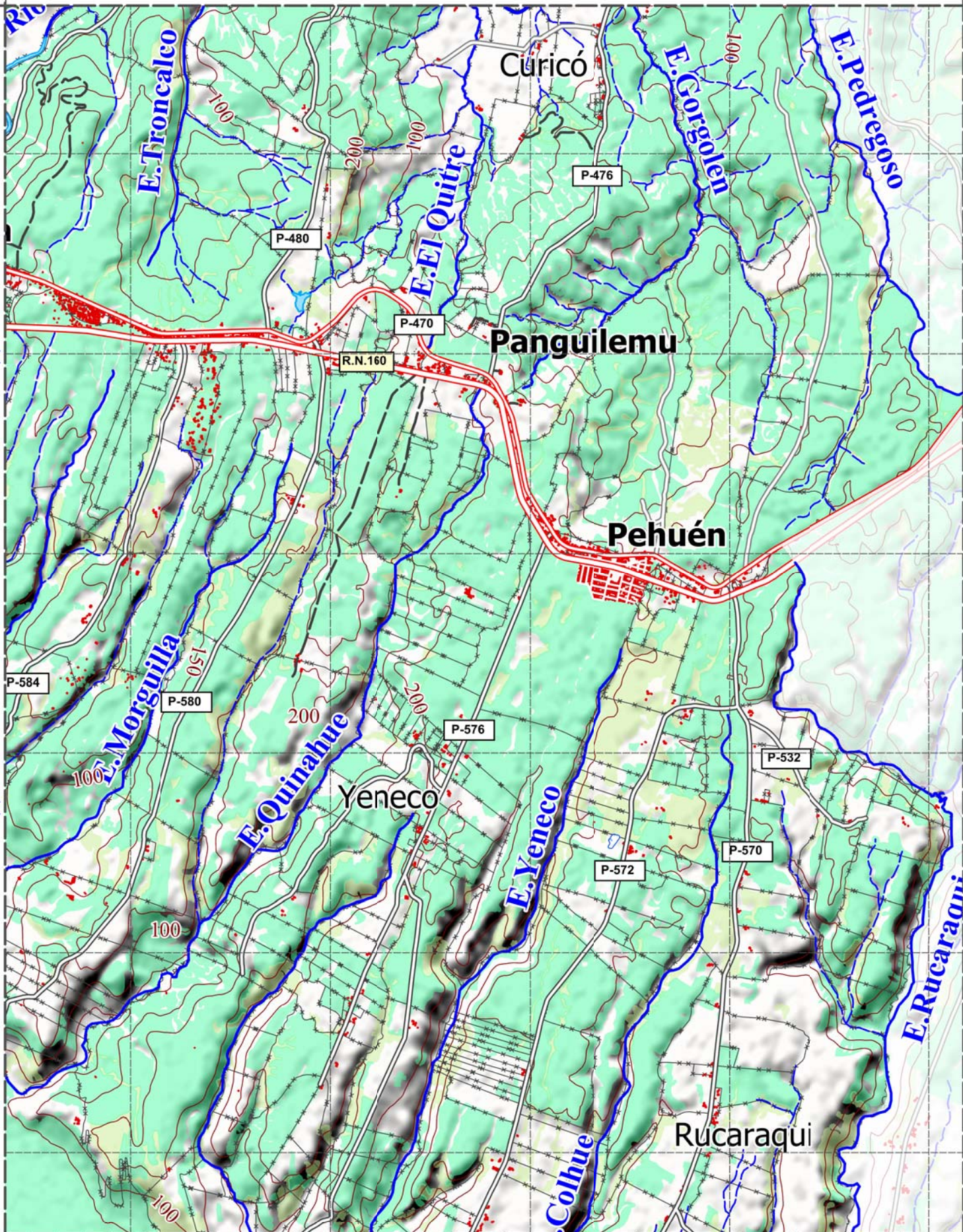
Curaco

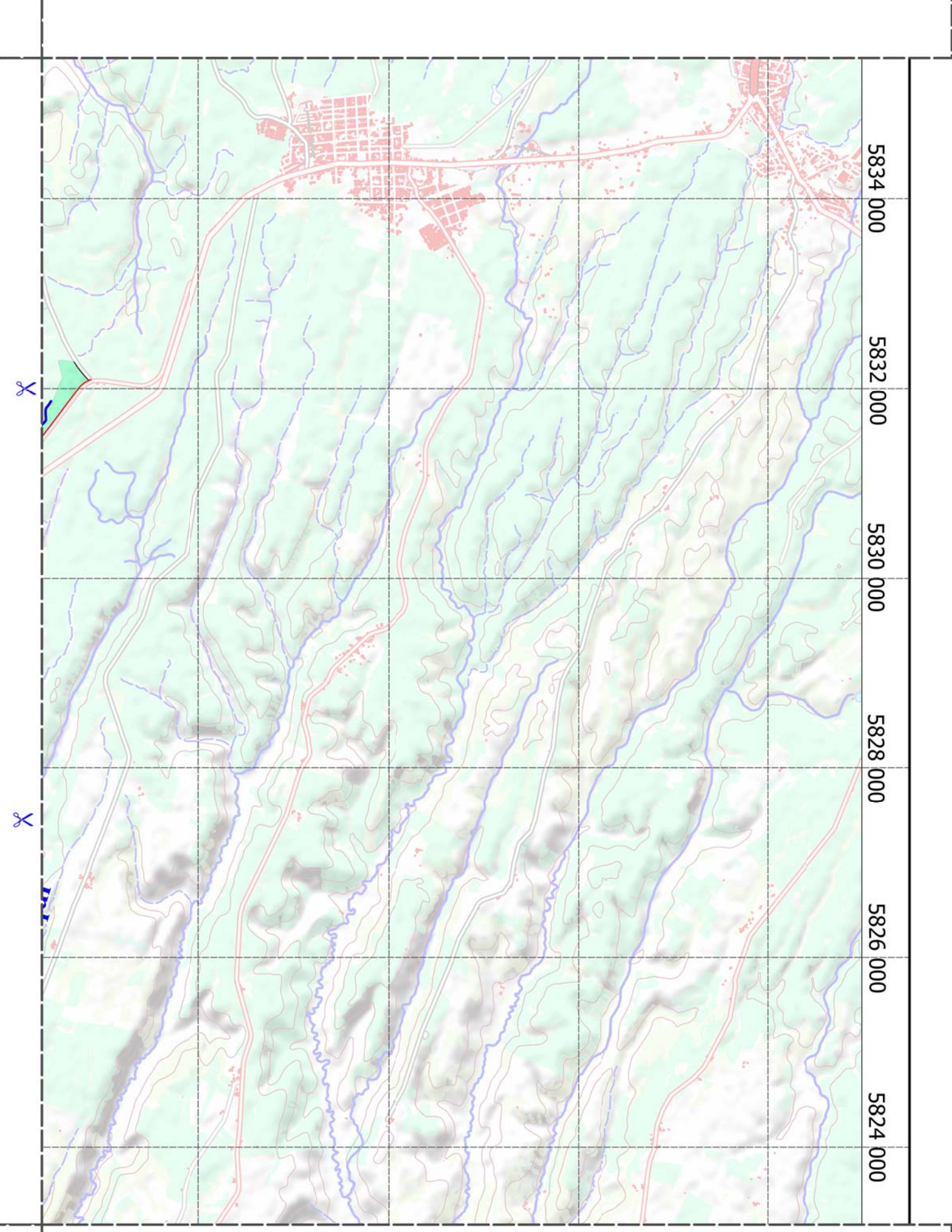
Morguilla

E. Curaco

Aeródromo
Los Pehuenches

Co. Santa
Cruz
102





5834 000

5832 000

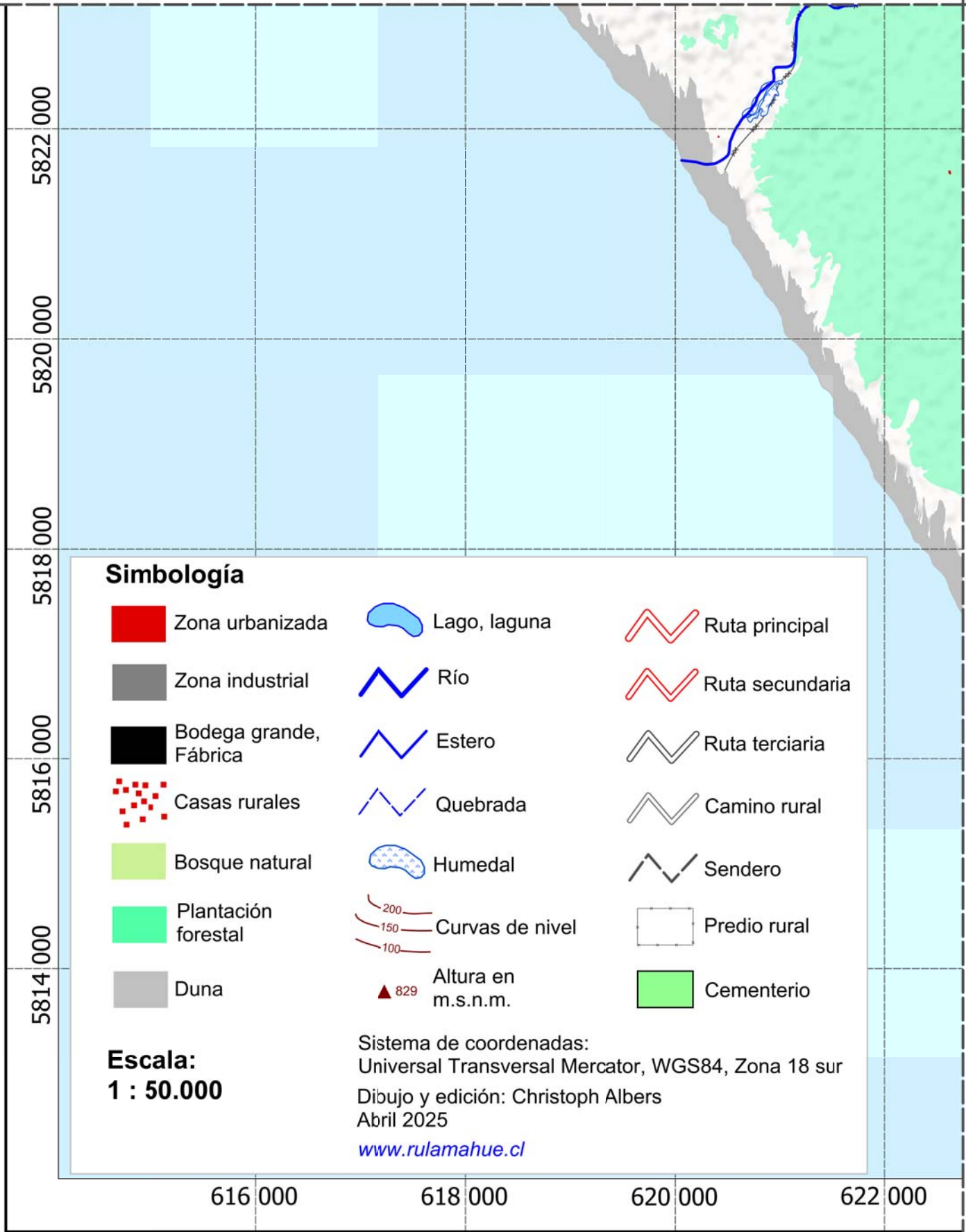
5830 000

5828 000













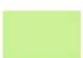


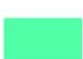




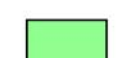
5826 000

5824 000

Hoja 3-3

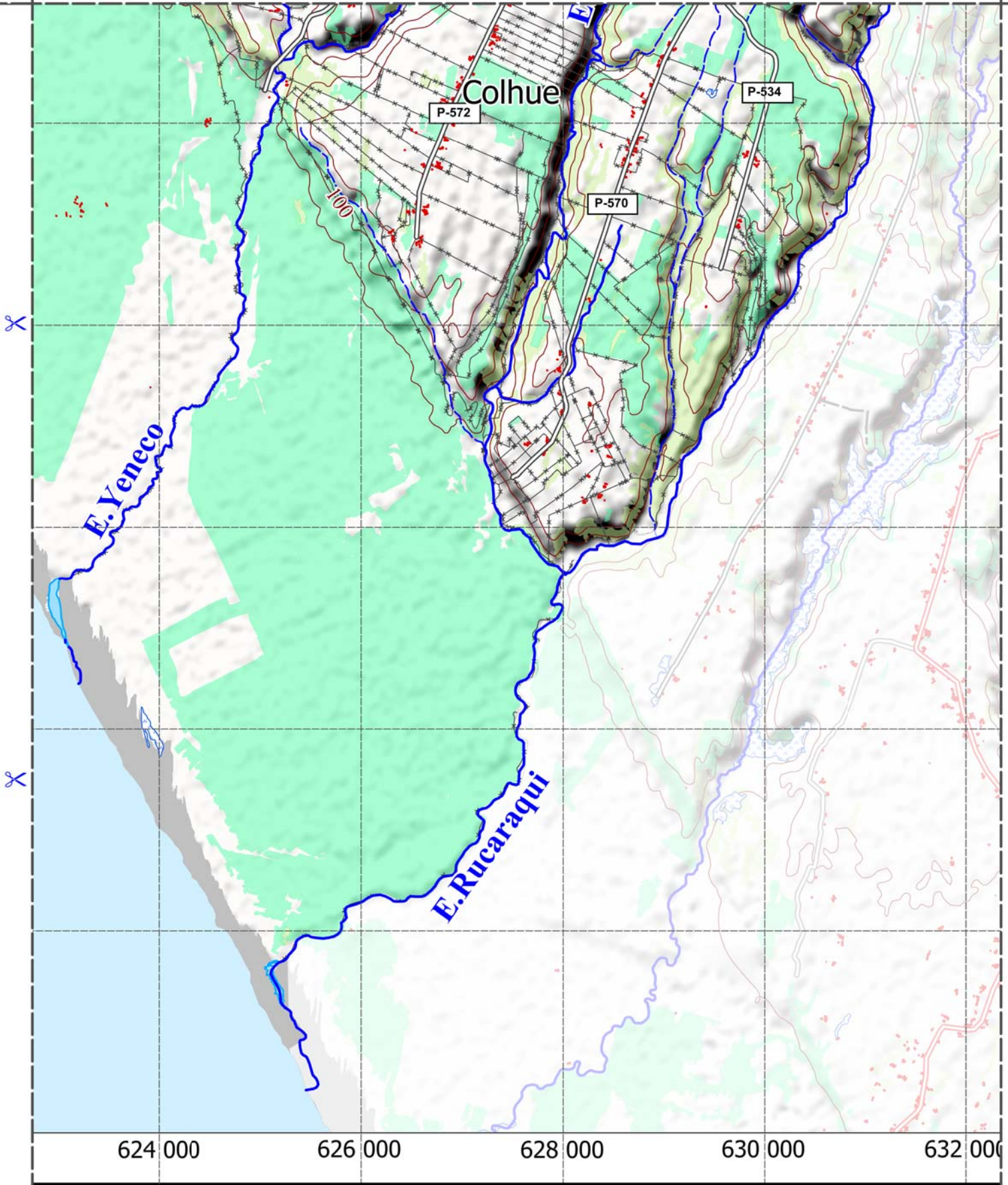


Simbología

- | | | |
|--|--|--|
|  Zona urbanizada |  Lago, laguna |  Ruta principal |
|  Zona industrial |  Río |  Ruta secundaria |
|  Bodega grande, Fábrica |  Estero |  Ruta terciaria |
|  Casas rurales |  Quebrada |  Camino rural |
|  Bosque natural |  Humedal |  Sendero |
|  Plantación forestal |  Curvas de nivel
200
150
100 |  Predio rural |
|  Duna |  Altura en m.s.n.m.
829 |  Cementerio |

Escala:
1 : 50.000

Sistema de coordenadas:
Universal Transversal Mercator, WGS84, Zona 18 sur
Dibujo y edición: Christoph Albers
Abril 2025
www.rulamahue.cl



Hoja 4-3

