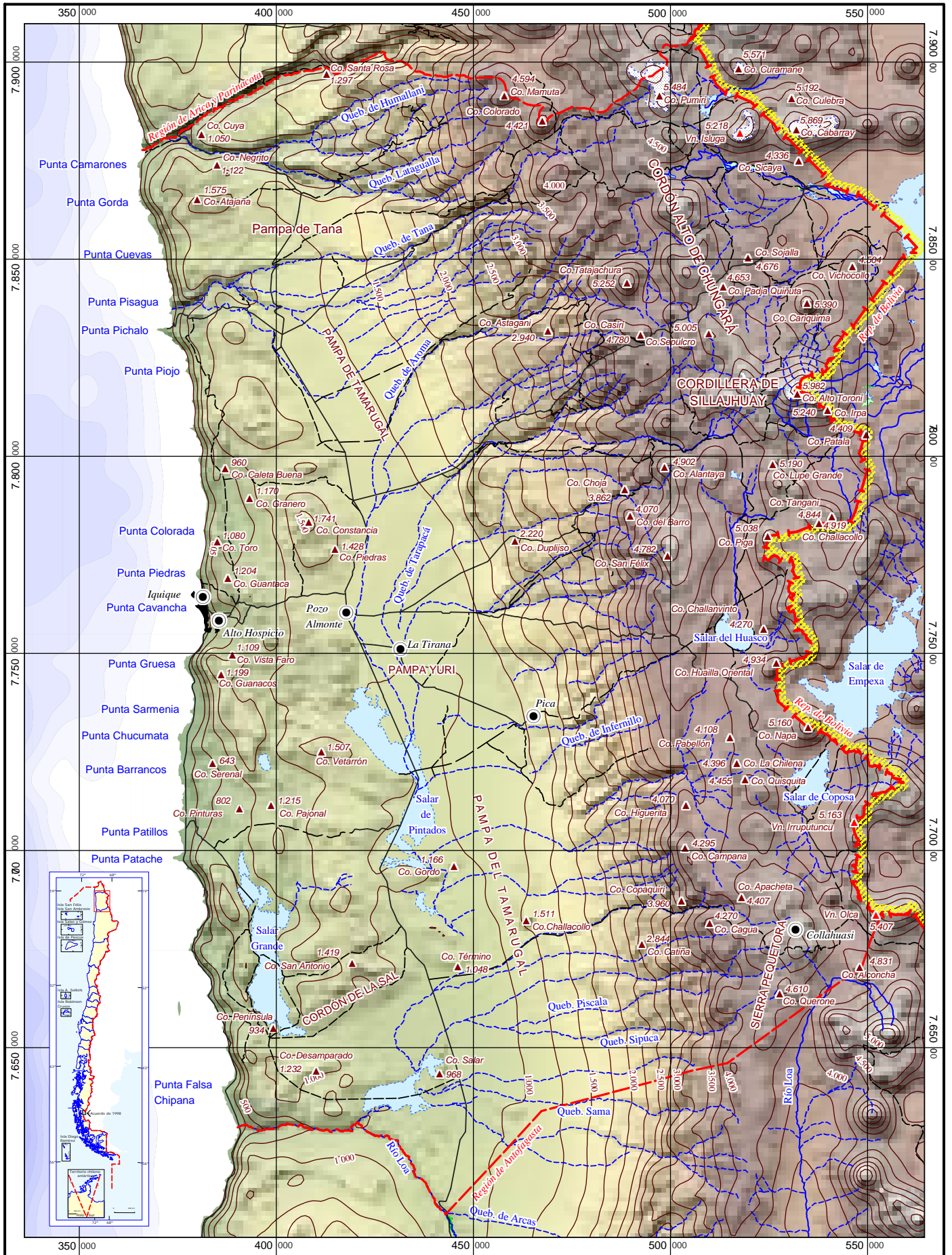







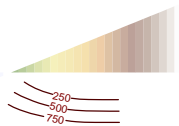
Región de Tarapacá - Topografía



Simbología

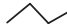

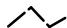
-  Lago, Laguna
-  Salar
-  Bofedal

-  Río, Esteros
-  Quebrada



Altitudes y profundidades

Curvas de nivel cada 250 m

-  Ruta pavimentada
-  Camino de ripio
-  Camino de tierra

Escala 1 : 1.300.000

Sistema de coordenadas:
Universal Transversal Mercator,
WGS84, Zona 19 sur



www.rulamahe.cl